

Ferrite Clamp

MRFC Series



Ferrite clamp for low frequency range

- Aimed to suppress low frequency noise between 150kHz ~ 30MHz
- Plastic screw mount option available
- Operating temperature: -40°C ~ 85°C
- UL94 V-0 rated housing

Material: Soft Ferrite

Housing: PA66 (Color: Light gray / Flammability: UL94V-0)

***MRFC-H40: PC/ABS (Color: Black / Flammability: UL94V-0)**

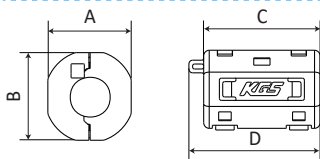
Dimensions

Unit:mm

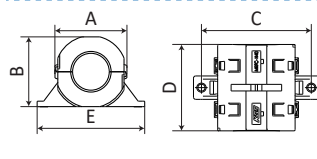
Part Number	A	B	C	D	E	Applicable cable diameter	Impedance Ω/10MHz (1 turn)
MRFC-8 ①	20.1	20.4	31.5	35.5	-	MAX Φ 8.5	≥20
MRFC-13 ①	29.1	33.05	32.3	37.1	-	MAX Φ 13.5	≥20
MRFC-20 ①	40.3	40	47	53.5	-	MAX Φ 20.0	≥20
MRFC-H40 ②	76.7	74.2	100	81.2	114.5	MAX Φ 40.0	≥25 (1MHz)

Profile: ① & ②

Profile: ①



Profile: ②



How to distinguish this product MRFC series (for low frequency) from GRFC series (for high frequency)

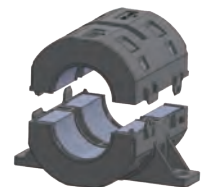
① Cable tie insertion position
② Cable clamp opening profile

① Right side
② With protrusions

① Left side
② No protrusion

Screw mount

MRFC-H40

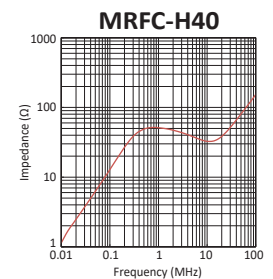
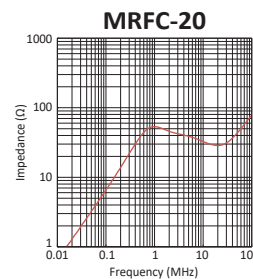
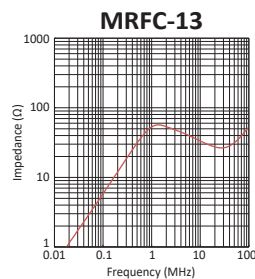
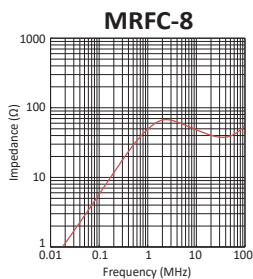


Assembly with cable tie



Split parts of top and bottom before assembly

Impedance vs Frequency



Please request for detailed product specification data prior to purchase

All statements, specifications, properties, technical information, and recommendations herein are based on tests; however, the accuracy and completeness are not guaranteed and are subject to change without notice due to product improvement and specification change. This statement is made in lieu of all warranties, expressed or implied, including the implied warranties of marketability, and fitness for purpose. KITAGAWA INDUSTRIES America, Inc. obligation under this warranty shall be limited to replacement of product that proves to be defective. Prior to use, the user shall determine the suitability of the product for its intended use, and the user assumes all risk and liability whatsoever in connection therewith. KITAGAWA INDUSTRIES America, Inc. shall have no liability for any injury, loss, or damage arising out of the use of or the inability to use the products. No statement or recommendation contained herein shall have any force or effect unless in an agreement signed by officers of seller and manufacturer. Reprinting or copying any content in KGS America catalogs is strictly prohibited without prior consent. KITAGAWA INDUSTRIES America, Inc. logos and markings are registered trademarks of KITAGAWA INDUSTRIES America, Inc. (dba KGS America) or an affiliate company thereof. KGS America logo may not be used or copied under any circumstances.

Please contact the sales department at KITAGAWA INDUSTRIES America, Inc. for the use of our products prior to selecting the parts for your application.

www.kgs-ind.com

Ferrite Clamp_MRFC Series_REV0_11142022