



Broad Effect Core

BREK-55-75-25-SR

NEW



Amorphous alloy core with excellent magnetic saturation resistance

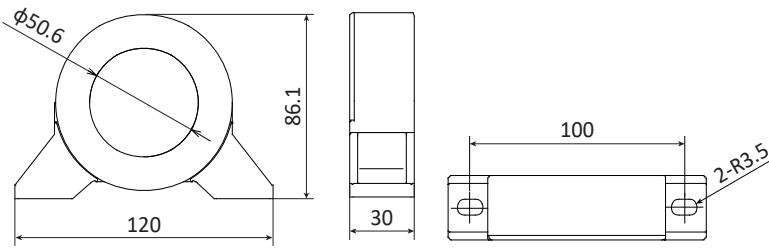
- Due to its excellent magnetic saturation resistance, the core is effective for EMC management when the common mode noise current is large
- Provides high impedance characteristics over a wide range
- Since the influence of temperature on the impedance characteristics is small, the performance is stable over a wide temperature range
- Screw fixation enables excellent vibration resistance. (Equivalent to JIS C 6 0068-2-6)
- The resin case uses an UL94V-0 certified material

Application:

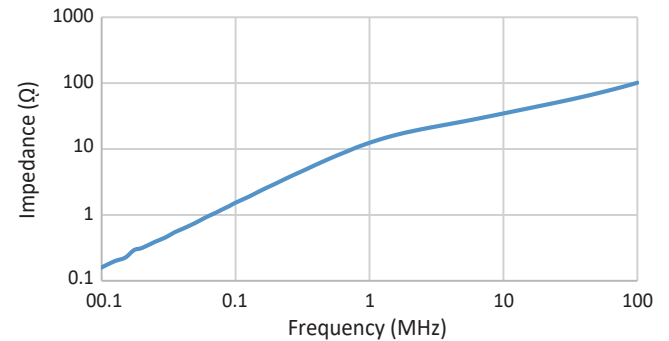
Suppression of conducted and radiated noise for the energy market, medical, and industrial equipment.

■ Dimensions

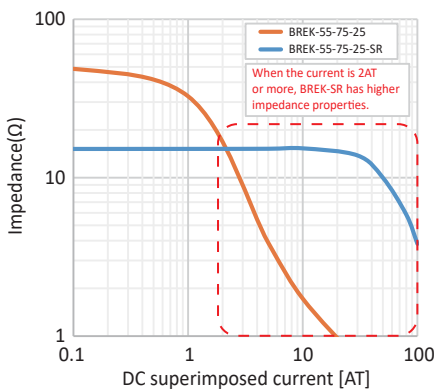
Unit:mm



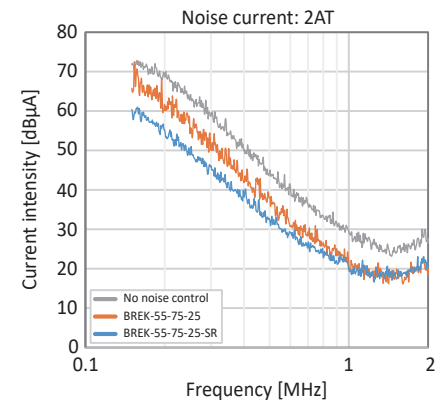
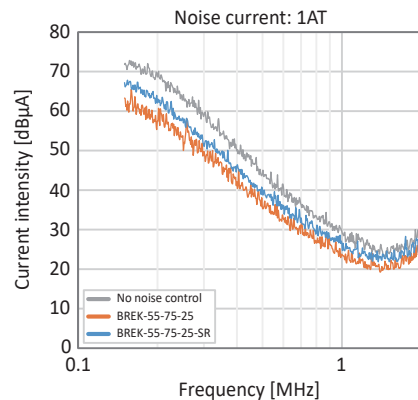
■ Impedance vs. Frequency



■ Magnetic saturation properties (f=1MHz)



■ Noise suppression effect



Tel: 1-855-EMC-PART (1-855-362-7278) Email: sales@kgs-ind.com

Please request for detailed product specification data prior to purchase

All statements, specifications, properties, technical information, and recommendations herein are based on tests; however, the accuracy and completeness are not guaranteed and are subject to change without notice due to product improvement and specification change. This statement is made in lieu of all warranties, expressed or implied, including the implied warranties of marketability, and fitness for purpose. KITAGAWA INDUSTRIES America, Inc. obligation under this warranty shall be limited to replacement of product that proves to be defective. Prior to use, the user shall determine the suitability of the product for its intended use, and the user assumes all risk and liability whatsoever in connection therewith. KITAGAWA INDUSTRIES America, Inc. shall have no liability for any injury, loss, or damage arising out of the use of or the inability to use the products. No statement or recommendation contained herein shall have any force or effect unless in an agreement signed by officers of seller and manufacturer. Reprinting or copying any content in KGS America catalogs is strictly prohibited without prior consent. KITAGAWA INDUSTRIES America, Inc. logos and markings are registered trademarks of KITAGAWA INDUSTRIES America, Inc. (dba KGS America) or an affiliate company thereof. KGS America logo may not be used or copied under any circumstances.

Please contact the sales department at KITAGAWA INDUSTRIES America, Inc. for the use of our products prior to selecting the parts for your application.

www.kgs-ind.com

Broad Effect Core_BREK-55-75-25-SR_REV0_08112023